

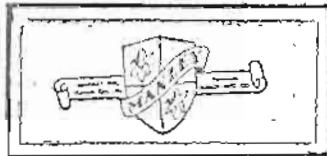
INSTRUCTIONS FOR THE OPERATION

OF YOUR

PREMIER & LIFETIME MODEL

MANLEY POPCORN MACHINE

MANLEY, INCORPORATED
P.O. BOX 1006
KANSAS CITY, MISSOURI 64141
PHONE: AREA CODE (816) 421-6155
UNITED STATES AMERICA



PREMIER & LIFETIME
INSTRUCTION MANUAL

MOST IMPORTANT

YOUR MACHINE WAS DESIGNED AND BUILT TO PERFORM PROPERLY UNDER A CERTAIN FIXED SET OF CONDITIONS.

IT HAS BEEN WIRED IN ACCORDANCE WITH THE WIRING DIAGRAM CONTAINED IN THE INSTRUCTIONS. ANY CHANGES, EITHER ELECTRICAL OR MECHANICAL, WILL VOID YOUR GUARANTEE UNLESS THE CHANGES CARRY A WRITTEN OPINION AND APPROVAL FROM AN EXECUTIVE OF MANLEY, INC., WRITTEN FROM ITS HOME OFFICE IN KANSAS CITY, MISSOURI.

BEFORE MAKING ADJUSTMENTS OR REPAIRS, ALWAYS COMPARE THE DIAGRAM WITH THE ACTUAL HOOKUP TO BE SURE THEY AGREE.

DO NOT ALLOW ANY CHANGES TO BE MADE IN YOUR EQUIPMENT WITHOUT FIRST DETERMINING IF THE CHANGE COULD BE HAZARDOUS TO EITHER PERSONNEL OR EQUIPMENT. SOME MACHINES HAVE BUILT-IN SAFETY DEVICES, SAFETY DOORS, LIMIT SWITCHES, AND THE LIKE. THESE ARE FOR YOUR PROTECTION. THEY SHOULD BE MAINTAINED IN GOOD CONDITION.

MOST IMPORTANT

HOW TO INSTALL YOUR MANLEY PREMIER

Your Manley Premier Popcorn Machine left the factory in perfect condition. Trouble-free operation is assured if you have it installed by a competent electrician.

In case of damage in transit, concealed or otherwise, call the shipping company, get a bad order ticket, send the ticket to Manley, Inc. with a list of damages.

When unpacking the machine make sure you find the popcorn and salt measure, the popcorn scoop and the salt which is packed with the machine.

After unpacking move the machine to its location and with the electrician proceed step by step, using the wiring schematic enclosed as a guide.

1. Your Manley Premier Machine is rated at 2660 watts and 115 volts. This means that for best results the popcorn machine should be hooked to a separate circuit.
2. A special receptacle is sent with the machine. Have your wiring arranged so as to connect to this receptacle.

TO INSTALL POPPING MACHANISM

Hold the kettle so that the arm is toward you, facing to your left.

Slip lid bracket into bayonet joint provided.

Put on and tighten thumb screw.

Slip flexible drive shaft into its protective cable.

Insert top lug into slot.

Bend slightly, slip bottom lug into position, then tighten.

Insert flexible seasoning tube in the same manner.

Insert kettle plug.

OPERATING INSTRUCTIONS

1. Turn on the heat.
2. Push down seasoning tube heater switch to melt seasoning remaining in the line. Failure to follow this step may result in the destruction of the pump.
3. Pump seasoning into the kettle.

4. Put popcorn and 1 teaspoon salt into corn cup. When kettle has reached proper heat pour popcorn and salt into the kettle. Start the motor.

5. Empty out popped corn when popping operation is complete.

(In Models 101 and 111 no seasoning well is provided).

CARE OF BEARINGS AND FLEXIBLE DRIVE SHAFT

Oil the bearings in the kettle lid and in the top of the machine two or three times weekly. Three or four drops of a good grade machine oil will do the trick.

STIFF KETTLE LID

When the machine is new, the lid on the kettle may be a little stiff, but after it has operated a few weeks the kettle lid will open of its own accord as the popping corn presses upward against it. While the machine is new and until the kettle lid does open freely as the corn pops and presses against it, raise the lid and allow the corn to flow freely from the kettle.

When the corn has stopped popping in the kettle, dump it about half way over, then let it go back into its natural position again. There may be some unpopped kernels that got caught away from the heat in the popped corn. By allowing them to remain in the kettle a little longer, they will all pop.

ELECTRICAL TROUBLE

When your popcorn machine will not work, the first thing to check is the fuse box or circuit breaker. Next, be sure the wall plug connection is tight. When you have assured yourself that there is ample power at the plug, the only possibility of your kettle not working properly is a bad switch or a loose connection. Where this happens, call an electrician, have him check out the circuits, using the schematic enclosed.

IMPORTANT Regardless of whether or not the line is loaded to capacity, it is a good idea to turn off the warming element when popping corn. This will save electricity as it is not necessary to use the warming pan element except when you are keeping stored popcorn hot. Never leave your heat switch on when not popping corn. The heat will tend to carbonize any remaining seasoning in the kettle when it is not in use.

THERMOSTATIC CONTROL

Your Manley Machine is equipped with a built-in thermostatic control. This control is a safety device only, designed to turn off the heat of the kettle when it is 5 to 10 degrees hotter than it should be for popping duty.

When it trips it on again it is slightly under correct popping temperature. It has been asked why this thermostatic control is not arranged to keep the kettle at exactly the right temperature at all times. So far our tests on an arrangement of this kind have not been entirely satisfactory due to the wide range of temperature of raw corn at various times of the year, ranging from 30 degrees below Zero in some parts of the country in the winter to 110 degrees in the shade in other parts of the country in summer months. This wide variation of the temperature of the raw corn makes it practically impossible to arrange a thermostat that will work properly at all times and under all conditions. As a safety device, it is a very important feature of your equipment. It is a protection against careless operation, such as going away nights and leaving the kettle on, or allowing the kettle to get so hot that it might burst into flames when you put the seasoning in. Regardless of this safety feature, operators should at all times see to it that the heat in the kettle is turned off when not in operation. The pilot light gives an added danger signal showing you when the heat is on. The switch plate on top of the machine provides for six circuits: The kettle, seasoning well, pan, lights and motor and blower.

SEAS-O-MATIC

Your seasoning well is heated by a series of electric elements controlled by a switch on the switch plate. This switch should be turned on about 10 minutes before you start popping and left on as long as the operator is attending the machine. Like any other electrical appliance, it should be turned off when not in use.

THE SEASONING WELL MAY BE REMOVED AS FOLLOWS:

1. Loosen nut connectin pump to seasoning line.
2. Pull seasoning well half way out with front handle.
3. Pull out plug cord.
4. Grasp both handles front and rear and remove to a convenient place for filling.
5. Seasoning well should be refilled whenever the seasoning gets below the level of the pump cylinder.

PUMP

Once the pump and the seasoning line are primed, exactly the same amount of seasoning will reach the kettle at each stroke.

SEASONING TUBE HEATER SWITCH

You will note that the seasoning tube is insulated. This insulation is a covering and a protection for your seasoning tube heating element. When the seasoning congeals in the tube after the popcorn machine has been idle for some time, you have only to press down the switch above

the switch plate, hold it down for a minute, and then actuate the pump. This action will clear the line.

NOTE: Do not leave your seasoning well on when it contains little or no seasoning. There are some vegetable oils used as popcorn seasoning that are apt to break down under heat and deposit gummy carbon-like residue on the bottom of the well. Never leave your kettle or seasoning well on when the machine is unattended. All oils are inflammable and anything inflammable is dangerous.

DRAWERS

The top left drawer is the cash drawer. This drawer is likely to get rather warm at times due to the reflected heat from the warming pan above. This is something that cannot be helped. The next drawer down is the corn bin. The bottom drawer on the left side is the waste drawer used to catch old maids and half-pops. The bottom drawer on the right-hand side is a general utility drawer. The two spaces between the corn bin and the seasoning well are for the storage of bags and cartons.

WARMING PAN

The warming pan and the bar screen arrangement were designed with the idea of making it practically impossible for operators to sell old maids, half popped kernels and broken pieces of popcorn. There is plenty of profit in popcorn without trying to sell the waste. Selling this waste will only irritate your customers and ruin your business. Operators sometimes get a false idea of the amount of waste by the amount of broken kernels they find in the old maid drawer. If those broken kernels were separated from the old maids and weighed, you would find the actual weight to be negligible.

LIGHTS

Display lights in the top of the machine may be replaced by opening the top lid. Display lights in the front of the cabinet may be changed by removing the seasoning well on one side or the corn bin on the other and sliding the access drawer to one side.

BREAKING UP POPCORN

Many operators break up a lot of popcorn through faulty handling of the scoop. Under no circumstances should the scoop be dug down into the middle of the popcorn. It should be slid along the warming pan from side to side or from front to back. In this way, the popcorn will not be broken and you will have less waste. On the right side of the pan there is a flat space with a warming element underneath which may be used as a carton rack. It is not that we feel a carton rack is necessary or advisable, but many operators feel that they must have one. We believe it is far better not to have popcorn sacked or boxed too far ahead of time.

Experience shows that the extra time involved in sacking or boxing popcorn delays the action just enough to get people to stop at the machine. After all, it is a proven fact that the busier the operator and the more people there are around the machine, the more popcorn will be sold. If you attract one customer and delay him long enough to sack or box his popcorn, you will probably draw two others who have seen him buy. The power of suggestion is a wonderful thing!

CLEANING

The entire popping mechanism may be removed by reversing the installation instruction. For convenience, these steps will again be stated:

1. Pull out the kettle plug.
2. Disconnect the flexible seasoning tube extension and the flexible drive shaft.
3. Remove knurled thumb nut.
4. Grasp kettle firmly and remove from machine.
5. By taking a small screwdriver and loosening the screws on the top of the lid, the kettle then may be removed from the lid. The kettle and lid may then be cleaned both inside and out.

Your kettle should be removed and cleaned at least once a week; more often if possible. You should keep the kettle as clean and bright inside and out as any kitchen utensil you use in your home. All that is necessary is an inclination on the part of the operator to keep it clean. If it is not cleaned thoroughly at least once a week, see to it that your operator at least wipes off the outside of the kettle with a clean, soft rag. If you let it go, a gummy carbon-like residue, which is extremely hard to remove, will build up on the lid and shroud. Never clean with lye or any compound that will disintegrate the aluminum. Never let water come in contact with the electrical connections.

When carbon builds up on the inside of the kettle use steel wool rather than knife or other sharp instrument. Keep every drawer space in the machine free from an accumulation of old rags.

PLASTIC DOORS

Clean the doors with window cleaner. If the door becomes scratched, scratches may be removed by applying some light wax.

SANITATION

After your popcorn machine has been uncrated, it should be cleaned and polished thoroughly. In order to preserve the luster of the frame you should coat it with a little Johnson's No. 7 floor wax.

This will act as a preservative just as a coat of wax preserves the finish of your automobile. It is just as important to keep your popcorn machine spotless as it is for your operator to be clean and neat. Beauty and eye appeal sell popcorn. Keep your popcorn machine spotlessly clean at all times.

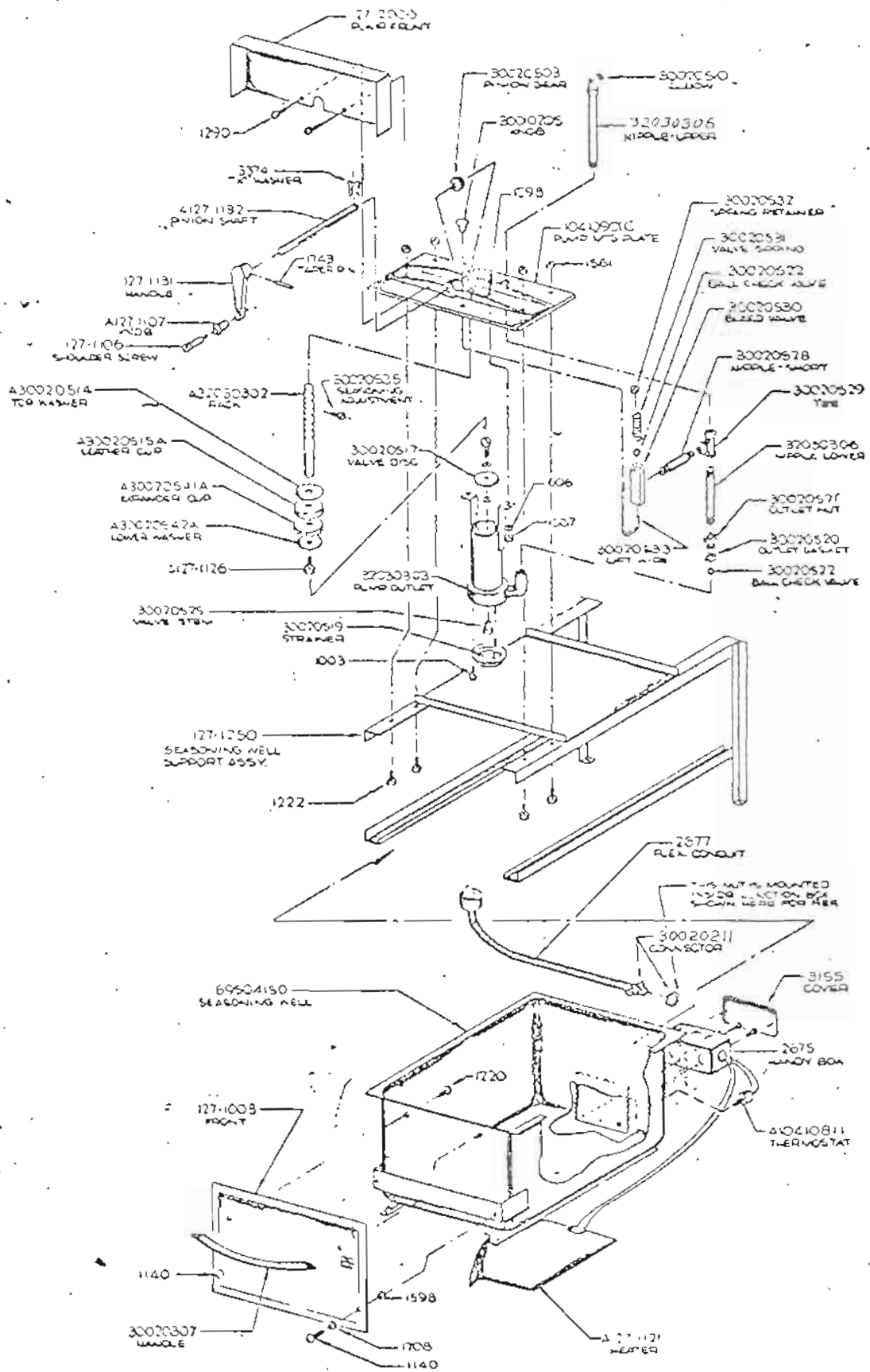
THE MANLEY POPPING MECHANISM

Your kettle is the most efficient popping mechanism that has ever been designed for a popcorn machine. Its heating unit is a Calrod heating element packed in Mercuric Oxide in a vacuum and under high pressure. It is rolled in sheet steel, galvanized, and then cast right into the kettle. This means you have a heating element that is theoretically everlasting. The double seal prevents oxidation and it is oxidation that causes the failure of heating elements.

This is a double kettle. The inner one is cast aluminum, and the outer, spun aluminum polished to a mirror surface. The insulation between the two kettles provides for greater heating and at the same time the outer kettle retains its highly polished surface.

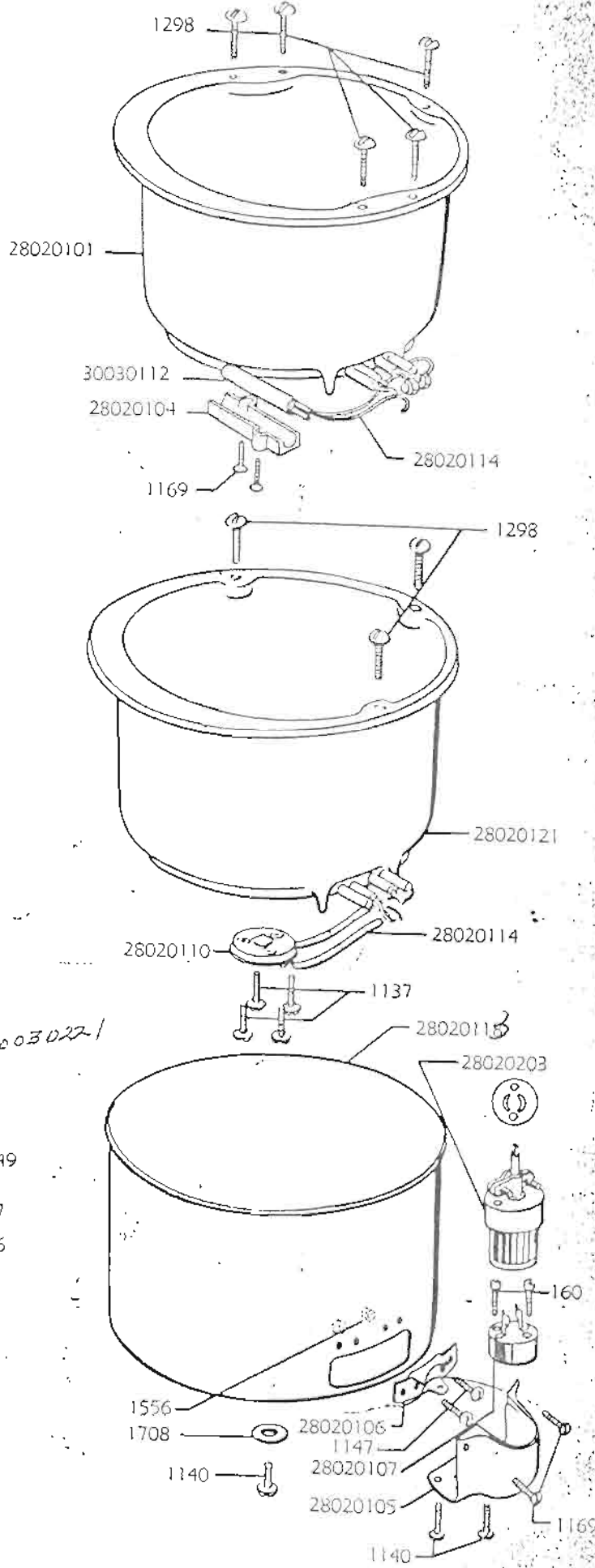
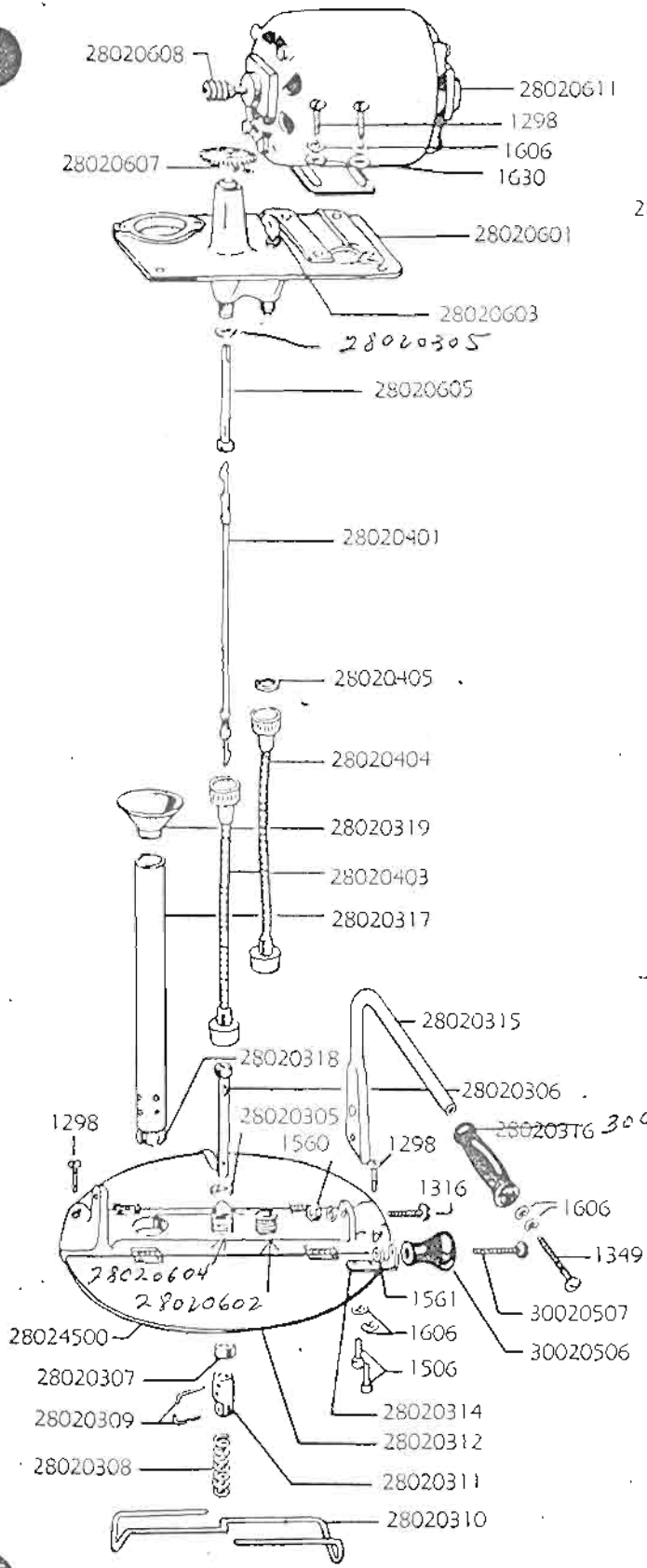
ORDERING PARTS

When ordering parts for your popcorn machine be sure to order by number. Parts numbers for all working parts are shown on the schematics contained herein. Include the serial number of your machine.



MODEL NO. 127
SEASONING WELL AND PUMP ASSEMBLY

REV.	DATE	BY	CHKD.	DESCRIPTION
1				
2				
3				
4				
5				
6				
7				
8				
9				
10				



REGULAR M 1946 to 1950 LIFETIME

PARTS LIST FOR MODEL #28

<u>ASSY.</u>	<u>S.ASSY.</u>	<u>PART</u>	<u>DESCRIPTION</u>	<u>REQ'D</u>
28-010000			CABINET ASSEMBLY	1
	28-0101009		FRAME SUB. ASSEMBLY	1
		28-010119	PLATE, CASTER $\frac{1}{2}$ x 3	4
		28-010120	POST, ALUM FRONT $\frac{1}{2}$	2
		28-010121	POST, ALUM REAR 58 $\frac{1}{4}$	2
		30-020103	CASTERS	4
		28-010123	BRACKET, PANEL MANGER	2
		28-010124	BRACKET, PANEL SUPPORT	1
		28-010125	PLATE, MANLEY SERIAL NO.	1
		28-010126	SUPPORT, ANGLE SEASONING WELL	1
		28-010127	SUPPORT, SIDE SEASONING WELL	1
	28-010200		REFLECTOR BOX SUB. ASSEMBLY - LEFT	
		28-010201	BOX	1
		28-010202	DOOR	1
		28-010203	HANDLE	1
		28-010204	SLIDES	2
		28-010910	PLASTIC BUSHING #320	2
		20-010310	RECEPTACLE SIGN	1
		28-010206	BRACKET, RECEPTACLE	1
		32-011907	BULB, LIGHT 25 WATT	1
	28-010300		REFLECTOR BOX SUB. ASSEMBLY - RIGHT	
		28-010307	PLUG, SEASONING WELL #1320	1
	28-010400		EAG COMPARTMENT SUB. ASSEMBLY	
		28-010401	TOP	1
		28-010402	SIDE, LEFT	1
		28-010403	SIDE, RIGHT	1
		28-010404	SHELF	1
		28-010405	POT TOMS	1
		28-010406	REAR	1
	28-010500		OLD MAID CHUTE SUB. ASSEMBLY	
		28-010501	SIDES	2
		28-010502	BRACE	1
		28-010503	BRACKET, MOUNTING	2
		28-010504	BOTTOM	1
		28-010505	BACK	1
	28-010600		SHELF, SEASONING WELL SUB. ASSEMBLY	
		28-010601	SHELF	1
		28-010602	BRACKET, PANCAKE ELEMENT	1
		28-010603	ELEMENT, PANCAKE 125 w.110 v.	1
		30-020211	CONNECTOR BOX $\frac{1}{2}$ "	1
		28-010605	AUTOFLEX	1
		28-010606	STOP, SEASONING WELL	1
		28-010607	BOX, ELEMENT COVER	1

REGULAR M 1946 to 1950 LIFETIME

PARTS LIST FOR MODEL #28

<u>ASSY.</u>	<u>S.ASSY.</u>	<u>PART</u>	<u>DESCRIPTION</u>	<u>REQ'</u>
		28-010700	BOTTOM SUB. ASSEMBLY	
		28-010701	BOTTOM	1
		28-010702	GUIDES - RIGHT, CENTER LEFT	3
		28-010703	STOP, OLD MAID	1
		28-010704	SOLDER LUG, 35 amp	1
		28-010800	RAT SHIELD SUB. ASSEMBLY	
		28-010801	RIGHT SIDE	1
		28-010802	LEFT SIDE	1
		28-010803	BACK	1
		28-010900	WARMING PAN SUB. ASSEMBLY	
		28-010901	PANEL - RIGHT	1
		28-010902	PANEL - LEFT	1
		28-010903	PANEL - FRONT	1
		28-010904	PANEL - REAR	1
		28-010905	STRIPS	4
		28-010906	SCREW BASE	6
		28-010907	STRIP HEATERS 220 v. 250 w.	3
		28-010916	STRIP HEATERS 115 v. 250 w.	3
		28-010908	BOX, OUTLET	3
		28-010909	COVER, OUTLET BOX	3
		28-010910	PLASTIC BUSHING #320	6
		28-010911	SCREEN, OLD MAID 10 BAR	1
		28-010912	SCREEN, OLD MAID 11 BAR	1
		28-010913	SCREEN, OLD MAID 12 BAR	1
		28-010914	SCREEN, OLD MAID 13 BAR	1
		28-010917	SCREEN, OLD MAID 9 BAR	1
		28-010915	PAN SHIMS	1
28-010950		28-010951	WARMING PAN 5L DOUBLE ASSEMBLY WARMING PAN RE-ANODIZED	
		28-011000	PANEL SUB. ASSEMBLY	
		28-011001	PANEL, FRONT	1
		28-011051	PANEL, FRONT REPAINTED	1
		28-011002	PANEL, RIGHT	1
		28-011052	PANEL, RIGHT REPAINTED	1
		28-011003	PANEL, LEFT	1
		28-011053	PANEL, LEFT REPAINTED	1
		28-011004	DIVIDER FRONT TRIM	1
		28-011006	REAR CASTING, FRONT TRIM DIVIDER	1
		28-011007	EXTRUSION, FRONT COVER	
		28-011008	EXTRUSION, REAR RIGHT	1
		28-011009	EXTRUSION, REAR LEFT	1
		28-011010	HAND RAIL, RIGHT	1
		28-011011	HAND RAIL, LEFT	1
		28-011012	"T" MOULDING, CENTER TOP	1
		28-011013	"T" MOULDING, LOWER-RIGHT & LEFT	2
		28-011015	LUCITE PANEL LOWER RIGHT & LEFT	2
		28-011016	DOUBLE FRONT PANEL	1
		28-011056	DOUBLE FRONT REPAINTED	

REGULAR M 1946 to 1950 LIFETIME

PARTS LIST FOR MODEL #28

<u>ASSY.</u>	<u>S.ASSY.</u>	<u>PART</u>	<u>DESCRIPTION</u>	<u>REQ'D</u>
	28-011100		UTILITY DOOR SUB. ASSEMBLY - RIGHT	1
	28-015100		UTILITY DOOR SUB. ASSEMBLY - LEFT	1
		28-011102	FILLER, MASONITE	1
		28-011101	FRONT	1
		28-011103	BACK PLATE	1
		28-011104	HINGE, UTILITY DOOR	1
		30-010710	HANDLE #307	1
		28-011105	CATCH	1
	28-011200		CORN BIN SUB. ASSEMBLY	
		28-011201	FRONT	1
		28-011202	FILLER, MASONITE	1
		28-011203	BACK PLATE	1
		28-011205	HINGE	1
		30-010710	HANDLE	1
		28-011211	STOP	1
	28-011250		CORN BIN ASSEMBLY M-50 DOUBLE MACHINE	
	28-011215		CORN BIN HINGE ASSEMBLY	
	28-011300		CASH DRAWER SUB. ASSEMBLY	
		28-011301	FRONT	1
		28-011302	FILLER, MASONITE	1
		28-011303	BACK PLATE	1
		28-011304	BODY	1
		28-011305	EXTENSION, LONG	1
		28-011306	EXTENSION, SHORT	1
		28-011307	DIVIDER CURRENCY	2
		28-011308	MOULDING WOOD	1
		28-011309	END, CASH DRAWER MOULDING	2
		28-011310	SEPARATORS, CHANGE	2
		28-011314	ANGLE, RIGHT & LEFT GUIDE	1
		28-011315	CHANNEL, RIGHT & LEFT GUIDE	1
		32-010121	STOP	1
		28-011320	CASH DRAWER MOULDING, COMP.	1
	28-011330		CASH DRAWER ASSEMBLY - DOUBLE	1
	28-011400		OLD MAID BIN SUB. ASSEMBLY	
		28-011401	BOTTOM	1
		28-011402	SIDES	2
		30-020412	HANDLE #222	2
	28-011500		SEASONING WELL SUB. ASSEMBLY	
		28-011501	CASTING, SEASONING WELL	1
		28-011502	DOOR, REFILL	1
		28-011503	FRONT, STAINLESS	1
		30-010205	KNOB, CHROME	1
		28-011504	FILLER, MASONITE	1
		28-011505	BACK PLATE	1
		28-011506	BRACKET, HEATER ELEMENT	1
		28-011507	BOX, SEASONING WELL ELEMENT COVER	1
		28-011508	CLAMP, LEAD CORD	1

REGULAR M 1946 to 1950 LIFETIME

PARTS LIST FOR MODEL #28

<u>ASSY.</u>	<u>S.ASSY.</u>	<u>PART</u>	<u>DESCRIPTION</u>	<u>REQ'D</u>
		28-011509	COVER, CLEANOUT	1
		28-011510	ELEMENT, STRIP HEATER	2
		28-011511	GROMMETT, RUBBER	1
		28-011512	MALE PLUG, STANDARD ATTACHMENT	1
		28-011522	MALE PLUG, ARMORED STANDARD ATTACHMENT FOR O-4 WELLS	1
		30-020211	BOX CONNECTOR 1/2"	1
		30-011514	AUTOFLEX, OR C-4 WELLS 23" HANDLE #307	1
		28-011515	MICA INSULATION	1
		28-011516	SEASONING WELL LEAD CORD #16 IRON CORD, LESS PLUG	1
		28-011517	SEASONING WELL LEAD CORD #16 IRON CORD, WITH PLUG	1
		28-011519	SEASONING WELL LEAD CORD FOR C-4 WELLS WITH PLUG	1
	23-011600		SEASONING PUMP SUB. ASSEMBLY	
		28-011601	PLATE, PUMP TOP	1
		30-020502	RACK	1
		30-020503	PINION, MACHINE	1
		30-020553	PINION AT STENNERS, NOT MACHINED	
	30-020555		PUMP HANDLE SUB. ASSEMBLY - (INCLUDES HANDLE, KNOB, BOLT SHAFT, TAPER PIN & COTTER KEY)	1
		30-020504	SHAFT, PINION	1
		30-020505	HANDLE, CASTING	1
		30-020506	KNOB, WOOD	1
		30-020507	SHOULDER SCREW	11
		30-020508	TAPER PIN, 3/4"	1
		30-020509	COTTER KEY	1
		30-020510	ELBOW, IMP F-50	1
		30-020511	BUSHING, PUMP HANDLE SHAFT	2
		30-020512	SLEEVE, PUMP BACK	2
		30-020513	WING NUT	4
		30-020514	WASHER, ALUM, TOP	1
		30-020515	LEATHER CUP	1
		30-020516	WASHER, ALUM. LOWER	1
		30-020542	WASHER ALUM LOWER USED WITH EXPANDER CUP, OPTIONAL	1
		30-020517	VALVE, INTAKE	1
		30-020518	VALVE, STEM	1
		30-020519	STRAINER	1
		30-020520	GASKET, OUTLET	1
		30-020521	NUT, OUTLET	1
		30-020522	VALVE, BALL CHECK	1
		30-020523	CASTING, OUTLET	1
		30-020524	BARREL	1
		30-020525	BRACKET, BARREL MOUNTING	2
		28-011602	NIPPLE, OUTLET	1
		30-020537	HOOK SCREW	4
		30-020541	EXPANDER CUP	1

REGULAR M 1946 to 1950 LINETIME

PARTS LIST FOR MODEL #28

<u>ASSY.</u>	<u>S.ASSY.</u>	<u>PART</u>	<u>DESCRIPTION</u>	<u>REQ'D</u>
	28-011700		SEASONING TUBE SUB. ASSEMBLY	
		30-031401	TUBE, ALUM.	1
		30-031402	SLEEVEING, FIBERGLASS 5/16"	1
		30-031403	SLEEVEING, FIBERGLASS 3/8"	1
		30-031405	NUT, FLARE 41 FS	2
		28-011701	SWITCH, SEASONING #3392	1
		28-011702	CLAMP, UPPER	1
		30-031406	CLAMP, LOWER	1
		28-011703	LUG, SPADE	1
		28-011704	EYELET, BRASS	1
		28-011705	LUG, MALE E-50	1
		28-011706	COVER, CONNECTOR	1
		28-011707	SEASONING TUBE EXTENSION	1
	28-011800		DROP DOOR, SUB. ASSEMBLY	
		28-011801	DROP DOOR	1
		28-011802	HINGE	1
		28-011850	DROP DOOR	
28-011850			DROP DOOR DOUBLE ASSEMBLY M-50	1
	28-011900		SERVING DOOR SUB. ASSEMBLY - RIGHT	1
	28-015900		SERVING DOOR SUB. ASSEMBLY - LEFT	1
		28-011901	DOOR PLASTIC, LESS HARDWARE	1
		30-010602	HINGE	2
		30-010603	HANDLE	1
		30-010604	STOP	1
		30-010605	CATCH, INSIDE	1
		30-010606	RUBBER BUMPERS	1
		28-011902	ROLLER DOOR CATCH	1
	28-012000		GLASS & RETAINER SUB. ASSEMBLY	
		28-012001	GLASS FRONT	1
		28-012002	GLASS SIDE	2
		28-012003	RETAINER, FRONT	2
		28-012004	RETAINER, REAR	2
		28-012005	RETAINER, TOP FRONT	1
		28-012006	RETAINER, TOP SIDE	2
		28-012007	GLASS SIDE, SAFETY	2
		28-012008	GLASS FRONT, SAFETY	1
		28-012009	DOUBLE FRONT GLASS	1
		30-010115	CHANNEL, FRONT	1
		30-010116	CHANNEL, SIDE	2
	28-012100		WHITE TOP SUB. ASSEMBLY - PAINTED TOP	
		28-012101	TOP	3
		28-012102	BRACE, SHORT Z	1
		28-012103	BRACE, LONG Z	1
		28-012104	BRACE, ANGLE 30"	1
		28-012105	BRACE, ANGLE 33"	1
		28-012106	BRACE, ANGLE 8 5/8	1
		28-012107	CLIP, WIRE	1
		28-012108	BRACKET, TOP REFLECTOR	1
		28-012109	WHITE TOP COVER	1

REGULAR M 1946 to 1950 LIFETIME

PARTS LIST FOR MODEL #28

<u>ASSY.</u>	<u>S.ASSY.</u>	<u>PART</u>	<u>DESCRIPTION</u>	<u>REQ'D</u>
28-012200			SALT BIN SUB. ASSEMBLY	
		28-012201	BOTTOM	1
		28-012202	SIDE, LEFT	1
		28-012203	SIDE, RIGHT	1
		28-012204	COVER	1
28-012300			SALT DISPENSER, SUB. ASSEMBLY	
		28-012301	BARREL	1
		28-012302	SHAFT	1
		28-012303	CAP	1
		28-012304	METER	1
		28-012305	PIN, DOWELL 1/8 x 3/4	1
		28-012306	LEVER	1
		28-012307	PIN DOWEL 1/8 x 1/2"	1
		28-012308	EXTENSION, METER	1
		28-012309	SET SCREW 8-32 x 5/8	1
		28-012310	SPRING	1
		28-012311	LINK	1
		28-012312	GASKET	1
		30-010205	KNOB, #613	1
32-011900			REFLECTOR, LIGHT SUB. ASSEMBLY	
		32-020201	REFLECTOR	2
		32-020202	RING, REFLECTOR	1
		32-020203	GASKET, FELT	1
		32-020204	LENS	1
		30-010310	RECEPTACLES, SIGN	1
		32-011906	BULB, LAMP 60 w.	1
			FRONT LAMP BRACKET SUB. ASSEMBLY	
			BRACKET ATTACHMENT	2
		28-012402	BRACKET	1
		30-010310	RECEPTACLE, SIGN	2
		32-011907	BULB, LIGHT 25 w.	2
28-012500			DECORATIVE TOP SUB. ASSEMBLY	
		28-012501	"T" TRIM, TOP FRONT & SIDES	1
		28-012502	"T" TRIM, REAR	1
		28-012503	CASTING CORNER RIGHT & LEFT	2
		28-012504	CASTING TOP SUPPORT #13701	4
		28-012505	CASTING TOP SUPPORT #13702	4
		28-012506	CASTING TOP SUPPORT #13703	2
		28-012507	CASTING TOP SUPPORT #13704	1
		28-012508	PLASTIC, FRONT IVORY	1
		28-012509	PLASTIC, SIDES IVORY	2
		28-012510	PLASTIC, RED CORNERS 12 x 13 x 1/8	4
		28-012511	SWITCH PANEL	1
		28-012512	CLIPS, SWITCH PANEL	2
		28-012513	RETAINERS, PLASTIC SIDE	2
		28-012514	RETAINERS, PLASTIC FRONT	1
			MANLEY EMBLEM	1
		28-012515	SALT BIN FLAP	1

REGULAR M 1946 to 1950 LIFETIME

PARTS LIST FOR MODEL #28

<u>ASSY.</u>	<u>S.ASSY.</u>	<u>PART</u>	<u>DESCRIPTION</u>	<u>REQ'D</u>
	28-012600		TOP FRAME SUB. ASSEMBLY	
		28-012601	ANGLE, LONG	2
		28-012602	ANGLE, SHORT	2
		28-012603	BRACKET, REAR LIGHT	2
		28-012604	BRACKET, FRONT LIGHT	2
		28-012605	GUSSET CORNER	4
		28-012606	RETAINER, PLASTIC, LONG	2
		28-012607	RETAINER, PLASTIC, SHORT	2
		28-012608	BRACE	1
		28-012609	ANGLE, REAR LIGHT	1
		28-012610	BRACE, CENTER FRAME	1
		28-012611	LID TOP VENTED	1
		30-010310	RECEPTACLES, SIGN	4
		32-011907	BULB, LIGHT 25 w.	4
		28-012650	TOP FRAME 54" DOUBLE	
		28-012651	VENTED TOP, DOUBLE	1
	28-012700		SALT BIN LID SUB. ASSEMBLY	
		28-012701	LID	1
		30-010205	KNOB	1
		28-020313	HINGE	1
	28-012800		SWITCH PLATE SUB. ASSEMBLY	
		28-012801	SWITCH PLATE CASTING - POLISHED	
		28-012851	SWITCH PLATE CASTING - RAW	
		28-012802	SWITCH #1331	4
		28-012803	SWITCH, KETTLE	1
	28-012804		PILOT LIGHT ASSEMBLY	
		28-012805	MOUNTING STRAP, #1354	1
		28-012806	LUG, LARGE FEMALE #CC25	5
		28-012807	LUG, SMALL FEMALE #AB87	6
		28-012808	BULB, PILOT 110 v	8
		28-012808	BULB, PILOT 220v	1
		28-011705	LUG, SMALL MALE B50	1
		28-012812	LUG, LARGE MALE C50	8
		28-012813	COVER PILOT LIGHT	1
	28-012900		SERVICE ENTRANCE SUB. ASSEMBLY	
			W/PLUG AND LEAD CORD	
		28-012901	LEAD CORD LESS PLUG	1
		28-012902	PLUG, MALE 3 PRONG KH 7089	1
		28-012903	BOX OUTLET A.O. $\frac{1}{2}$	1
		28-012904	COVER, OUTLET BOX A.O. 5	1
		28-012905	CLAMP, LEAD CORD	1
		28-012908	INSULATOR, FIBRE	1
		28-012909	COVER	1
		28-050004	LEAD CORD 4 WIRES FOR C-4 M	1
		28-050005	LEAD CORD PLUG FOR C-4 MACH. #7411	1
		28-050006	BASE PLUG #7410 for C-4 MACH. #7411	1
			BOX COVER FOR #7410 FOR C-4 machine old	1
		28-05007		1
		28-050008	RANGE PLUG, 146 MACHINE	1

REGULAR M 1946 to 1950 LIFETIME

PARTS LIST FOR MODEL #28

<u>ASSY.</u>	<u>S.ASSY.</u>	<u>PART</u>	<u>DESCRIPTION</u>	<u>REQ'</u>
		28-050099	RANGE REC. '46 MACHINE	1
		28-050012	PORCELAIN 3 w BASE PLUG #6659 & #3145 FOR REGULAR MACHINE	1
		30-020913	CONNECTOR 3/4" BOX	1
		28-012550	ENTRANCE BOX 6 x 6 x 4 COMPT.	1
		30-020901	ENTRANCE BOX 6 x 6 x 4	1
		30-020917	BLOICK, 2 POLE FUSE	1
		30-020916	FUSESTAT 20 amp	1
		30-020903	FUSESTAT ADAPTER 20 amp	1
		28-012953	FUSESTAT ADAPTER 15 amp	1
		28-012913	FUSESTAT 15 amp	1
		30-020912	COVER INSIDE BOX	1
	30-010851		TERM. BAR SUB. ASSEMBLY	1
		30-010811	BAKELITE FOR TERM. BAR	1
		30-010812	INSULATOR TERM. BAR	2
		30-010813	BAR, TERMINAL BRASS	1
		30-020909	NIPPLE 3/4" PIPE	1
		30-020910	LOCK NUT 3/4"	1
		30-020911	BUSHING, CONDUIT 3/4	2
		28-010910	BUSHING PLASTIC	1
28-020000			KETTLE & DRIVE MECHANISM	
		28-020121	KETTLE CASTING WITH 110 v. ELEMENT	
		28-020102	ELEMENT 1000w 110 v FORMED	1
		28-020103	ELEMENT 750 w 110 v FORMED	1
		28-020132	ELEMENT 1000w 220 v FORMED	1
		28-020133	ELEMENT 750 w 220 v FORMED	1
		30-030112	THERMOSTAT PENWALD	1
		28-020110	THERMOSTAT SPENCER	1
		28-020104	COVER, THERMOSTAT OLD STYLE	1
		28-020134	HOLDER, THERMOSTAT THICK BOTTOM KETTLE	1
		28-020105	HOUSING TERMINAL T.L.	1
		28-020106	BAR, TERMINAL T.L.	1
		28-020135	HOUSING TERMINAL - REGULAR	1
		28-020136	HOUSING BAR, TERMINAL - REGULAR	1
		28-020107	LINER #11823 T.L. 2-WAY MALE	1
		28-020111	LINER #5553 2-WAY REGULAR MALE	1
		28-020112	LINER #6058 3-WAY MALE	1
		28-020114	WIRE & BEADS FOR SPENCER TYPE KETTLE	
		28-020200	KETTLE LEAD CORD WITH #7101 PLUG T.L.	1
		28-023202	KETTLE LEAD CORD 2-WAY REG. #7086 PLUG	1
		28-023203	KETTLE LEAD CORD 3-WAY #8144 PLUG	1
		28-020201	KETTLE LEAD CORD W/7102 PLUG TOP & #8144 PLUG AT BOTTOM	1
		28-020231	KETTLE LEAD 3-WAY LESS PLUGS	1
		28-020221	KETTLE LEAD 2-WAY LESS PLUGS	1
		28-020232	AUTOFLEX 1/2" FOR 3 WIRE K. LEAD	1
		28-020202	AUTOFLEX 5/6" for 2-WIRE KETTLE LEAD	1
		28-020203	PLUG, LOWER FEMALE #7101 T.L.	1
		28-020207	PLUG, LOWER FEMALE #7086 REG. 2-WAY	1
		28-020208	PLUG, LOWER FEMALE #8144 REG. 3-WAY	1
		28-020204	PLUG, UPPER MALE #7102 2-W	1
		28-020209	PLUG, UPPER MALE #7086 3-W	1

REGULAR M 1946 to 1950 LIFETIME

PARTS LIST FOR MODEL #28

<u>ASSY.</u>	<u>S.ASSY.</u>	<u>PART</u>	<u>DESCRIPTION</u>	<u>REQ'D</u>
		28-020205	PLUG FEMALE, TOP OF MACHINE #8890 2-W	1
		28-020210	PLUG FEMALE, TOP OF MACHINE #7328 3-W	1
		28-020108	SHROUD COPPER, PLATED	1
		28-020113	SHROUD ALUM. PLATED	1
		28-020137	SHROUD REPLATED	1
		28-020153	SHROUD ALUM. SPUN ONLY, NOT PLATED	
		28-020157	SHROUD, RESPUN NOT PLATED	1
		28-020138	SHROUD, FOR SINGLE ELEMENT KETTLE POLISHED	1
28-020300			KETTLE LID ASSEMBLY	
		28-023100	STSF LID COMPLETE	1
		28-023200	STSF LID COMPLETE, LESS AGITATOR WIRE	
		28-023300	STSF LID COMPLETE, LESS AGITATOR AND AGITATOR WIRE	
		28-023400	STSF LID WITH LID FLAP, INSERTS & SEAS. SPRAY	
		28-023500	STSF WITH INSERTS & SEAS. SPRAY	
		28-023600	STSF LID COMPLETE, LESS HARDWARE	
		28-020211	KETTLE LEAD CORD WITH #9965 PLUG AT TOP AND #7101 PLUG AT BOTTOM T.L.	1
		28-024100	S.T.D.F. LID COMPLETE	
		28-024200	S.T.D.F. LID COMPLETE, LESS AGITATOR WIRE	
		28-024300	S.T.D.F. LID COMPLETE, LESS AGITATOR AND AGITATOR WIRE	
		28-024400	S.T.D.F. LID WITH LID FLAP, INSERTS AND SEAS. SPRAY	
		28-024500	S.T.D.F. LID WITH INSERTS & SEAS. SPRAY	
		28-024600	S.T.D.F. LID COMPLETE, LESS HANDLE	
		28-025000	T.T.S.F. LID COMPLETE	
		28-025000	B.T.S.F. LID COMPLETE	
		28-025200	B.T.S.F. LID COMPLETE, LESS AGITATOR WIRE	
		28-025300	B.T.S.F. LID COMPLETE LESS AGITATOR AND AGITATOR WIRE	
		28-025400	B.T.S.F. LID WITH LID FLAP, BUSHINGS AND SEAS. SPRAY	
		28-025500	B.T.S.F. LID COMPLETE W/BUSHINGS AND SEAS. SPRAY	
		28-025600	B.T.S.F. LID COMPLETE LESS HANDLE	
		28-123100	S.T.S.F. LID COMPLETE FOR THICK BOTTOM KETTLE	
		28-123200	S.T.S.F. LID COMPLETE 1/AG WIRE FOR T/B KETTLE	
		28-124100	S.T.D.F. LID COMPLETE FOR T.B. KETTLE	
		28-124200	S.T.D.F. LID COMPLETE, LESS AG. WIRE FOR T.B. KETTLE	
		28-125100	B.T.S.F. LID COMPLETE FOR T.B. KETTLE	
		28-125200	B.T.S.F. LID COMPLETE LESS AG. WIRE FOR T.B. KTL.	
		28-126100	B.T.D.F. LID COMPLETE FOR T.B. KETTLE	
		28-126200	B.T.D.F. LID COMPLETE LESS AG. WIRE FOR T.B. KTL.	
		28-020301	LID CASTING, ST SINGLE FLAP, POLISHED	
		28-025301	LID CASTING, ST SINGLE FLAP REPOLISHED	
		28-025351	LID CASTING, ST SINGLE FLAP RAW CASTING	

REGULAR M 1946 to 1950 LIFETIME

PARTS LIST FOR MODEL #28

<u>ASSY.</u>	<u>S.ASSY.</u>	<u>PART</u>	<u>DESCRIPTION</u>	<u>REQ'D</u>
	A-28-	020302	INSERT KETTLE, SEASONING	1
		28-020303	SEASONING SPRAY, S.T.	1
		28-020353	SEASONING SPRAY, P.T.	1
	A-28-	020304	INSERT, DRIVE SHAFT	1
		28-020305	THRUST BEARING	11
		28-020306	AGITATOR DRIVE SHAFT, RIGID SCREW TYPE O.S.	1
		28-020356	AGITATOR DRIVE SHAFT, RIGID ST FOR T.B. KTL.	1
		28-020336	AGITATOR DRIVE SHAFT, S.T. WITH BEARING, SET COLLAR AND SLEEVE FOR O.S. KETTLES	1
		28-020346	AGITATOR SHAFT S.T. W BEARING, AND SET COLLAR & SLEEVE FOR THICK BOTTOM KETTLE	1
		28-020328	AGITATOR SHAFT B.T. O.S. KETTLES	1
		28-020338	AGITATOR SHAFT B.T. T.B. KETTLES	1
		28-020348	AGITATOR SHAFT B.T. WITH SET COLLAR&& SLEEVE O.	1
		28-020358	AGITATOR SHAFT B.T. WITH SET COLLAR & SLEEVE T.	1
		28-020307	COLLAR, AGITATOR SET	1
		28-020308	SPRING, AGITATOR	1
		28-020309	PIN, AGITATOR	1
	A-28-	020310-C	WIRE, AGITATOR	1
		28-020312	FLAP, LID SINGLE POLISHED	1
		28-025310	FLAP, LID SINGLE, NOT POLISHED	1
		28-020342	FLAP, LID DOUBLE FRONT, POLISHED	1
		28-025342	FLAP, LID DOUBLE FRONT, NOT POLISHED	1
		28-020352	FLAP, LID DOUBLE REAR POLISHED	1
		28-025352	FLAP, LID DOUBLE REAR NOT POLISHED	1
		28-020362	FLAP, LID	1
28-	020362		FLAP LID ASSEMBLY WITH ANGLE, BOLT, KNOB, HINGES FOR SINGLE FLAP LID	1
28-	020372		LID FLAP ASSEMBLY WITH ANGLE, BOLT, KNOB & HINGES FOR FRONT DOUBLE FLAP LID	1
		28-020311	SLEEVE, AGITATOR	1
28-	020382		LID FLAP ASSEMBLY WITH CATCH & HINGE FOR REAR DOUBLE FLAP LID	1
		28-020313	HINGE, LID FLAP	2
		28-020314	BRACKET, ANGLE KNOB 1	1
		30-020506	KNOB, WOOD	1
		28-020315	HANDLE, DUMP CASTING ST. LIDS POLISHED	1
		28-020335	HANDLE, DUMP CASTING B.T. LIDS POLISHED	1
28-	020345		HANDLE ASSEMBLY W/WOOD HANDLE & BOLTS FOR B.T. LIDS	1
28-	020355	28-	HANDLE ASSEMBLY W/WOOD HANDLE & BOLTS FOR B.T. LIDS	1
		28-020316	HANDLE, WOOD - DRILLED	1
		28-020317	VENT TUBE, STRAIGHT TYPE	1
		28-020325	VENT TUBE, OFFSET TYPE	1
		28-020318	CLIPS, VENT TUBE	2
		28-020319	FUNNEL, VENT TUBE	1
		30-020507	SCREW, SHOULDER FOR KNOB	1

REGULAR M 1946 to 1950 LIFETIME

PARTS LIST FOR MODEL #28

<u>ASSY.</u>	<u>S.ASSY.</u>	<u>PART</u>	<u>DESCRIPTION</u>	<u>REQ'D</u>
		28-020321	LID CASTING, B.T. SINGLE FLAP POLISHED	
		28-020322	LID CASTING, B.T. DOUBLE FLAP LID POLISHED	
		28-020324	LID CASTING, S.T. DOUBLE FLAP LID POLISHED	
		28-020374	LID CASTING, S.T. DOUBLE FLAP LID - RAW	
		28-020327	BRONZE BUSHING, LONG FOR B.T. LIDS	1
		28-020614	BRONZE BUSHING, SHORT FOR B.T. LIDS	1
	28-020375		DOUBLE FLAP LID SUB. ASSEMBLY (FOR CARAMEL CORN KIT #3336 AND #3337)	
		28-020401	FLEX. DRIVE SHAFT, S.T.	1
		28-020403	HOUSING, FLEX. DRIVE S.T.	1
		28-020404	SEASONING TUBE, FLEX. S.T.	1
		28-020405	WASHER, NEOPREME FOR S.T. SEASONING TUBE	1
		28-020406	FLEX. DRIVE SHAFT, B.T.	1
		28-020407	HOUSING, FLEX. DRIVE B.T.	1
		28-020408	SEASONING TUBE FLEX. B.T.	1
		28-020409	WASHER, NEOPREME FOR B.T. SEASONING TUBE	1
		28-020500	KETTLE HANGER BRACKET '47 to '50 INCL.	
		28-020501	KETTLE BRACKET FRONT N.S. POLISHED	1
		28-020502	KETTLE BRACKET REAR N.S. POLISHED	1
		28-020506	KETTLE BRACKET, FRONT O.S. POLISHED	1
		28-020507	KETTLE BRACKET, REAR O.S. POLISHED	1
		28-020505	KETTLE KNOB, KNURLED	1
		28-020503	KETTLE, BOLT, FRONT	1
		28-020504	KETTLE, BOLT, REAR	1
		28-020329	RUBBER BUMPER, DUMP ARM	1
		28-020330	RUBBER BUMPER, KETTLE BRACKET	1
	28-020600		MOTOR SUB. ASSEMBLY	
		28-020621	MOTOR MOUNT CASTING WITH INSERTS & ELBOWS S.T.	
		28-020631	MOTOR MOUNT CASTING WITH INSERTS, ELBOWS DRIVE SHAFT & BRONZE GEAR FOR S.T.	
		28-020601	MOTOR MOUNTS CASTING, S.T.	1
		28-020613	MOTOR MOUNTS CASTING, B.T.	1
		28-020623	MOTOR MOUNT CASTING, B.T. WITH BUSHINGS	
		28-020633	MOTOR MOUNT CASTING B.T. WITH BUSHINGS, DRIVE SHAFT & BRONZE GEAR	
		28-020641	MOTOR MOUNT, CHANGE OVER WITH ELBOW & INSERTS	
		28-020651	MOTOR MOUNT, CHANGE OVER WITH INSERTS, ELBOW, BUSHING, DRIVE SHAFT & BRONZE GEAR	
		28-020662	MOTOR MOUNT CHANGE OVER WITH MOTOR & BLOWER	
		28-020602	INSERT, SEASONING, S.T.	1
		28-020603	ELBOW, DURAL, 90°	1
	A-28-020604		INSERT, DRIVE SHAFT, S.T.	1
		28-020605	DRIVE SHAFT, S.T.	1
		28-020615	DRIVE SHAFT, B.T.	1
		28-020327	BRONZE BUSHING LONG FOR B.T. MOTOR MOUNTS	
		28-020614	BRONZE BUSHING SHORT FOR B.T. MOTOR MOUNTS	
		28-020610	CASTING, BLOWER OUTLET	1
		28-020607	GEAR, BRONZE WORM, WITH SET SCREW	1
		28-020608	WORM, STEEL	1
		28-020609	PIN FOR WORM	1
			BUSHING, GILITE	1

REGULAR M 1946 to 1950 LIFETIME

PARTS LIST FOR MODEL #28

<u>ASSY.</u>	<u>S.ASSY.</u>	<u>PART</u>	<u>DESCRIPTION</u>	<u>REQ'D</u>
		28-020611	MOTOR S44MA-60 cycle 115 volt	
		28-020661	MOTOR S44MA-25 cycle 115 volt	
		28-020671	MOTOR S44MA-50 cycle 115 volt	
		28-020681	MOTOR S44MA 110 volt D.C.	
		29-020691	MOTOR S44MA 230 volt 60 cycle	
		28-021611	MOTOR, 60 cycle 115 volt with worm S44MA	
		28-021661	MOTOR, S44MA-25 cycle 115 volt with worm	
		28-021671	MOTOR S44MA-50 cycle 115 volt with worm	
		28-021681	MOTOR, S44MA 110 V.D.C. WITH WORM	
		28-021691	MOTOR S44MA-60 cycle 230 volt with worm	
		28-020692	MOTOR S44WM 1/20 220 volt 50 cycle	
		28-021607	IMPELLER, FASCO	1
		28-021608	IMPELLER, D.L.G.	1
		28-020616	DURAL PLUG, B.T. WORM MOUNT	1
		28-021602	BLOWER MOTOR I.L.G. 110 V.D.C.	
		28-021601	BLOWER MOTOR, FASCO 110 v. 60 cycle	
		28-021603	BLOWER MOTOR, I.L.G. 110 v. 60 cy.	
		28-021604	BLOWER MOTOR, I.L.G. 110 v. 60 cy. SERIES WOUND	
		28-021605	BLOWER MOTOR, FASCO 220 v. 60 cy.	
		28-021606	BLOWER MOTOR, I.L.G. 220 v. 60 cy.	
		28-050001	COMPLETE CHANGE OVER WITH SINGLE FLAP LID	
		28-050002	COMPLETE CHANGE OVER WITH DOUBLE FLAP LID	
		28-050003	WIRING HARNESS FOR MODEL 28 MACHINE	
		28-050011	BULB REFLECTOR SPOT FOR MODEL 28 MACHINE 150 w.	
		28-050013	VENT TUBE FILTER, COMPLETE	
		28-050014	SCREEN FOR VENT TUBE FILTER	
		28-050015	FIBERGLASS DISKS FOR VENT TUBE FILTER	
		28-050025	COMPLETE FILTER FOR TOP OF MACHINE	
		28-050026	PANEL, SIDE FILTER	4
		28-050027	BOX, OUTER CHARCOAL	1
		28-050028	BOX, INNER CHARCOAL	1
		28-050020	STEP UP TRANSFORMER FOR 28 MACHINE	
		28-050029	INNER BOX WITH CHARCOAL	1
		28-050021	FOOT, FILTER MTG. VISTA POP	2
		28-050022	FOOT, FILTER MTG. ARIS	2
		28-050023	FILTER	
28-050023			FILTER BOX WELD ASSEMBLY V.P.	1
28-050024			FILTER BOX WELD ASSEMBLY ARIS.	1
28-050030			BOX ASSEMBLY COMPLETE	
28-050031			BAG ASSEMBLY COMPLETE	
		28-050032	BOX SIGN ONLY	
		28-050033	BAG SIGN ONLY	
		28-050034	TRANSFORMER FOR BAG & BOX SIGNS	
		28-050035	"FRESH" NEON SIGN ONLY	
		28-050036	"HOT" NEON SIGN ONLY	
28-060000			TOP WELD ASSEMBLY REBUILT 46-50 DOUBLE WITH VISTA POP KETTLES	1
		28-060001	PLATE, TOP WHITE	1
		28-060002	ANGLE, FRONT & REAR	1

PARTS LIST FOR MODEL #28

<u>ASSY.</u>	<u>S.ASSY.</u>	<u>PART</u>	<u>DESCRIPTION</u>	<u>REQ'D</u>
		28-060003	ANGLE, CENTER	3
		28-060004	ANGLE, END	1
		28-060005	ANGLE, FRONT	4
28-070000			DECORATIVE TOP ASSEMBLY	
28-070101			"T" FRAME WELD ASSEMBLY	
		28-070102	"T" FRAME, FRONT & SIDES	1
		28-070103	"T" FRAME, REAR	1
28-070104			TOP FRONT TRIM WELD ASSEMBLY	1
		28-070105	TOP FRONT, TRIM	1
		28-070106	VENT TOP, RETAINER	1
		28-070107	TOP, VENT	1
		28-070108	PANEL, REAR TOP - RIGHT	1
		28-070109	PANEL, REAR TOP - CENTER	1
		28-070110	PANEL, REAR TOP - LEFT	1
		28-070111	PLATE, SWITCH	1
		28-022200	ELECTRIC FILTER	1

GUARANTEE

The equipment you have just received has been built to rigid specifications, by skilled workmen who take the utmost pride in their work. We warrant that this machine was in good operating condition when it left the factory. For a period of one year from date of purchase, Manley, Inc. will replace at no charge any parts of its own manufacture that failed because of defects in materials or workmanship. In the case of components, motors and the like, we will extend the manufacturer's guarantee. Those guarantees are enclosed herewith. Parts replaced under our guarantee program will be sent to you on receipt of the broken part. Manley, Inc. Does Not Pay Labor charges for installing these parts nor is it responsible for damage due to abuse or negligence. In no event will Manley's liability include buyer's loss of profit, good will, or any other special or consequential damages, Manley's obligations and warranty are limited to the replacement of the part or parts.

The warranty and liability set forth above are in lieu of all other warranties and liabilities, expressed or implied, in law or in fact, including implied warranties of merchantability and fitness for a particular use.

TRANSIT DAMAGE

Immediately upon receiving your equipment and before signing the freight bill, open the crate and inspect the machine for possible shipping damage. New regulations limit carrier liability to 1/3 or 1/2 of cost to repair concealed damage. Even then, that liability is assumed only if carrier representative is notified within 15 days of delivery and if crate is held for his inspection on your premises.